

## Installation Instructions

# InnoFlue Vent Systems

Installation guide for:  
**ICTCR02 Concentric Reversible Adaptor**



Centrotherm

Convert from **InnoFlue**® 2 1/4" Concentric to **InnoFlue**® 4" Single Wall or **InnoFlue**® 4" Single Wall to **InnoFlue**® 2 1/4" Concentric with the **InnoFlue**® Twin Pipe / Concentric Reversible Adaptor (ICTCR02)

### ICTCR02 Installation Instructions

Twin Pipe  
to  
Concentric

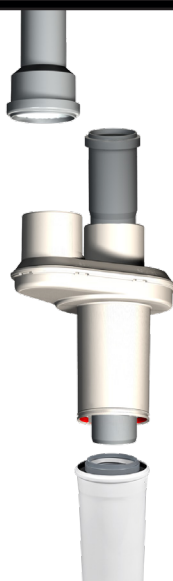


**Note:** Use Centrocerin® lubricant at each connecting point

#### Twin Pipe To Concentric Configuration

1. Assure air-intake and exhaust are securely attached to adaptor
2. Secure **InnoFlue**® Concentric vent (ICVL) to adaptor
3. Complete flue gas run with **InnoFlue**® Concentric components and termination

Concentric  
to  
Twin Pipe



#### Concentric to Twin Pipe Configuration

1. Assure **InnoFlue**® Concentric vent (ICVL) is securely attached to adaptor
2. Connect **InnoFlue**® single wall vents (ISVL) to Concentric adaptor
3. Complete flue gas run with **InnoFlue**® Single Wall components and termination

ICTCR02  
 Concentric Reversible  
 Appliance Adaptor  
 Installation Instructions  
 2018.02.22 | Rev 1

Centrotherm  
 400 South Pearl St.  
 Albany, NY 12202  
 Tel: 518.434.3400  
 Fax: 518.618.3166  
 info@centrotherm.us.com  
 www.centrotherm.us.com