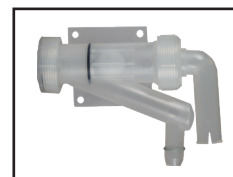


# InnoFlue® Commercial Vent Systems

## Single Wall (2" - 12")

C-UL2024  
07v01

1.1 These requirements cover venting systems intended for venting **Category II, III, or IV** gas-burning appliances as defined by the Standard for Gas-Fired Central Furnaces (except Direct-Vent Central Furnaces), ANSI Z21.47 and the **National Fuel Gas Code, NFPA 54**. Venting systems covered by these requirements are intended to be used with Category II, III, and IV appliances that have been installed in accordance with NFPA 54, and with codes such as the **BOCA National Mechanical Code, Standard Mechanical Code, Uniform Mechanical Code, and local codes**.



Siphons



Common Vent Kits & Components



Drain Fittings & Condensate Management Componentry

### PVC / CPVC

Standard Sch. 40 PVC / Sch. 80 CPVC **does not meet UL-1738 requirements.**

### Polypropylene

Specifically for temperatures up to and including 230°F. PP (polypropylene) used as **flue gas venting is specifically covered by this classification.**

### Stainless Steel

Specifically for temperatures up to and including 260°F, 330°F, 410°F, and 480°F.

Weight per Foot (lbs)				
	PVC (Sch. 40)	CPVC (Sch. 80)	InnoFlue®	Savings Over PVC
<b>2"</b>	.68	1.02	<b>.30</b>	56%
<b>3"</b>	1.41	2.09	<b>.32</b>	77%
<b>4"</b>	2.01	3.05	<b>.66</b>	67%
<b>6"</b>	3.53	5.82	<b>1.42</b>	60%
<b>8"</b>	5.39	8.83	<b>1.50</b>	72%
<b>10"</b>	7.55	13.09	<b>2.00</b>	73%
<b>12"</b>	10.01	18.00	<b>3.86</b>	61%

	InnoFlue® Polypropylene	PVC	CPVC
<b>Working Temp.</b>	<b>32° - 230°F</b>	50° - 149°F	50° - 149°F
<b>Softening Temp.</b>	<b>302°F</b>	176°F	176°F
<b>Melting Temp.</b>	<b>329°F</b>	194°F	194°F

### UL-1738 Factors

- Clearance to Combustibles
- Support Requirements
- Flammability
- Cold Weather Impact Resistance
- Joint Requirements
- Aging

Speed	Safety	Innovation
<ul style="list-style-type: none"> <li>• Gasketed push-fit connection system installs quickly / easily</li> <li>• No glues, primers, or solvents</li> <li>• Directional gasket and flow arrows ensure proper vent layout</li> <li>• Longer effective lengths means less components per install</li> <li>• Vents can be field cut to length to match venting requirements</li> <li>• Extremely lightweight</li> </ul>	<ul style="list-style-type: none"> <li>• Tested and Listed by Intertek to UL-1738</li> <li>• Zero clearance to combustibles in all applications</li> <li>• Approved by your trusted appliance manufacturers</li> <li>• All products are UV rated</li> <li>• LEED friendly</li> <li>• 100% Recyclable</li> </ul>	<ul style="list-style-type: none"> <li>• Only polypropylene supplier offering 10" and 12" diameters</li> <li>• Maximum positive pressure up to 20" of water column</li> <li>• In-house engineering quickly designs/creates custom components</li> </ul>

### Contact Us:

<http://centrotherm.us.com>  
[info@centrotherm.us.com](mailto:info@centrotherm.us.com)  
 518.434.3400



Centrotherm

InnoFlue®  
Polypropylene Vent Systems



UL 1738  
ULC S636