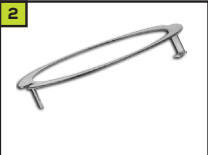





## Adaptors

		
<b>PVC Adaptor</b>	<b>Gasket</b>	<b>Steel Adaptor</b>
ISAAL	ISAGL	ISSA

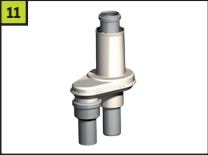


## Accessories

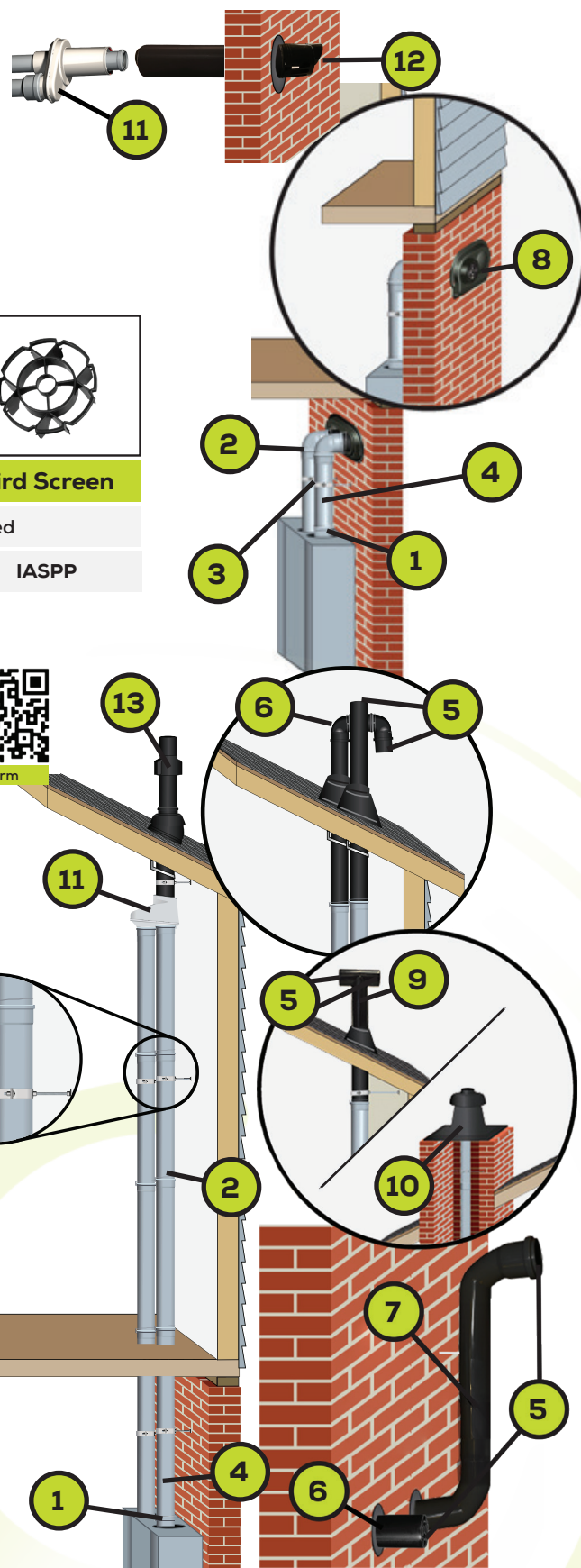
			
<b>Connector Ring</b>	<b>Support Clamp</b>	<b>Test Port</b>	<b>Bird Screen</b>
1 per fitting	Horizontal Every 39"	Vertical Every 78"	Recommended
IAN5	IASCM	ISTP	IASPP

## Termination Options

		
<b>End Pipe</b>	<b>Snork/Snout</b>	<b>Horizontal Wall</b>
ISEP	See Back	ISLPT
		
<b>Term Tee</b>	<b>Chimney Cap</b>	
ISTT	ISCP	

## Concentric Adaptor → Termination Options

		
<b>Adaptor</b>	<b>Wall Term.</b>	<b>Roof Term.</b>
ICTCR	Based on Installation	
	ICWT	ICRT



### Contact Us:

<http://centrotherm.us.com>  
[info@centrotherm.us.com](mailto:info@centrotherm.us.com)  
 518.434.3400


## Vent Lengths

InnoFlue never requires glues, solvents or primers. Each component has a socket, and a male/female fitting connection. Apply Centrocerin lubricant and push together.

	6"	8"	10"	12"
1'	ISVL061	ISVL081	ISVL101	-
2'	ISVL062	ISVL082	ISVL102	ISVL122
3'	ISVL063	ISVL083	ISVL103	ISVL123
6'	ISVL066	ISVL086	ISVL106	ISVL126
10'	ISVL0610	ISVL0810	ISVL1010	<b>ISVL129</b>
				9' Effective Length

## Elbows

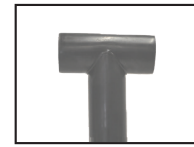
	6"	8"	10"	12"
45°	ISEL0645	ISELS0845	ISEL1045	ISEL1245
87°	ISEL0687	ISELS0887	ISEL1087	ISEL1287

<p><b>Two Minute Product Overview</b></p> 	<p><b>Take the Factory Tour!</b></p> 	<p><b>OEM Matrix</b></p> 
<p><b>Full I&amp;O Manual</b></p> 	<p><b>Condensate Management Guide</b></p> 	<p><b>Adaptor Guide</b></p> 

Scan QR codes for more information!

## Terminations

VSQG2024  
11v06



Grey Term. Tee

ISTT

## Large Diameter Accessories



Siphon

IASJVBS



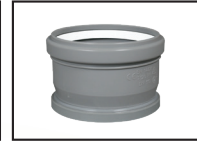
Drain Fitting

ISHDT



Tee

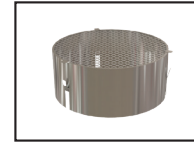
IST



Tee Cap

ISTCD

## Other Useful Components



Steel Bird Screen

IASSS



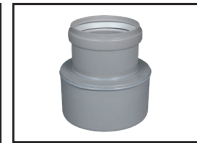
Wall Plate

IAWPP



Increaser

ISIA



Reducer

ISRSD



Centrocerin

IACE50



Centrotherm

**FIRST LISTED**

InnoFlue® is the first polymeric vent system tested and listed to ULC-S636 and UL-1738 in North America.

### Contact Us:

<http://centrotherm.us.com>  
info@centrotherm.us.com  
518.434.3400



Centrotherm

**InnoFlue®**  
Polypropylene Vent Systems



**UL 1738**  
**ULC S636**